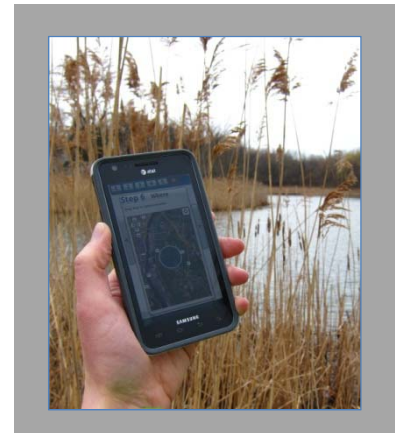




iMapInvasives

Sharing information for strategic management



iMapInvasives: A Collaborative Web-based Solution for Invasive Species Reporting and Data Management!

What is iMapInvasives?

iMapInvasives is an online, GIS-based, all-taxa data management tool for invasive species monitoring and management projects, from a local to a state-wide level. By using the latest in Geographic Information Systems (GIS) and web-based technologies, iMapInvasives creates an effective mechanism for sharing data between many partners, from citizen scientists to state and federal agencies.

On a broader scale, iMapInvasives is a growing, collaborative partnership between several states, creating a network of professionals and shared resources to help combat the threat of invasive species.

Who is iMapInvasives for?

iMapInvasives is designed with layered functionality to support efforts at many levels:

General public – Simple interface with generalized maps of locations (no point data) and online forms to report new sightings

Citizen scientists, educators, volunteers – Report invasive species on the map for confirmation, and view and search state data

Project leaders – Manage data submitted by volunteers and staff

Natural resource managers – Advanced mapping of infestations, surveys, and treatments with GIS-based polygons and detailed field forms; layered, customizable maps and reports; early detection watch lists, and email alerts

State administrators – Manage and review state data; batch/bulk upload datasets for partner organizations; customize state/province-specific iMapInvasives module (e.g., look-up tables, GIS layers, species lists); maintain user accounts; automatically direct significant reports to the appropriate authorities, and manage viewing levels for sensitive data



Survey Information

Search: Search for Location

* Survey Area
Use the buttons on the top right side of the map to add a feature:

- Use the red 'x' button to delete a polygon
- Use the green '+' button to draw a new polygon (Double click to end drawing the survey polygon.)
- Use the pan button to move the map or edit the polygon

Polygon Area (in square meters): 102790.82702108812

Basic Survey Fields

* Survey Goal:

* Lead Contact:

* Targeted Species: |

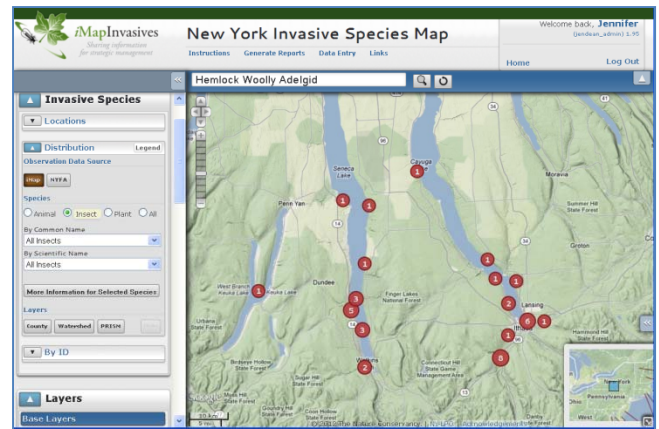
Targeted Species Detected: |

Basic Data Entry

Report infestations quickly and accurately

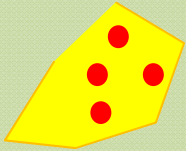
OBSERVATIONS record infestations as points on the map with step-by-step data entry to make reporting simple for all users.

Report observations online and with your smartphone!

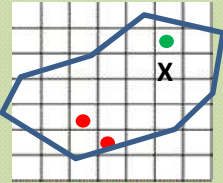


Advanced data entry

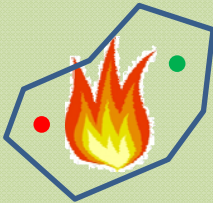
Online polygons plus detailed information in flexible data forms



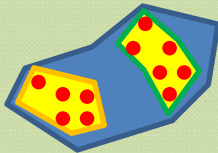
ASSESSMENTS describe the scope of infestations. Can be used to track spread of infestations or treatment effectiveness over time.



SURVEYS track search efforts in specific areas, and report whether or not the targeted species were detected. Customized forms make data entry simple for many types of projects, such as aquatic, host tree, and systematic surveys.



TREATMENTS document control efforts with detailed forms specific to treatment type (e.g., mechanical, biocontrol, chemical). Share information about control efforts with other trained iMap users who have treatment-level access for the state.



INFESTATION Management integrate many types of data for a defined, managed population that may include many observations, assessments, and treatments.

How can interested states and provinces participate in iMapInvasives?

For more information, please contact:

Meg Wilkinson

Invasive Species Database Program Coordinator

New York Natural Heritage Program

(518) 402-8983

Questions? Contact:

imapinvasives@nynhp.org

www.imapinvasives.org



New York
Natural Heritage
Program



Funding is provided by the
New York State Environmental Protection Fund,
The Nature Conservancy and Others