



iMapInvasives

Sharing information for strategic management



iMapInvasives: A Collaborative Web-based Solution for Invasive Species Data Aggregation, Mapping, Decision-Making & Action!

Invasive species are those non-native plants, animals and pathogens that survive and spread outside of cultivation and negatively impact biodiversity, human health, and the economy. One major challenge to the successful prevention and management of invasive species is the lack of an effective mechanism for sharing and aggregating data between multiple partners. *iMapInvasives* is a collaborative partnership that provides a venue for the comprehensive exchange of invasive species data using the latest in Geographic Information Systems (GIS) and web-based technologies.

What is iMapInvasives?

iMapInvasives is an online, GIS-based, all-taxa mapping tool that aggregates and displays invasive species location data from multiple sources. It provides versatile mapping resources for monitoring and management projects, from a local to state-wide level. Data is received from partners across the state or province through batch uploads and quality-controlled online submissions.

Who is iMapInvasives for?

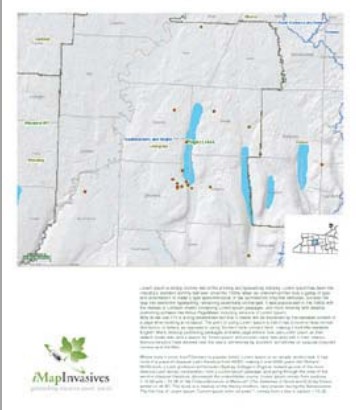
iMapInvasives is designed to support the control efforts of land managers at many scales, including regional invasive species management areas, state and local agencies, non-profit organizations, and community groups.

iMapInvasives also serves as an interactive tool for citizen scientists, educators, and researchers concerned with invasive species.

www.imapinvasives.org

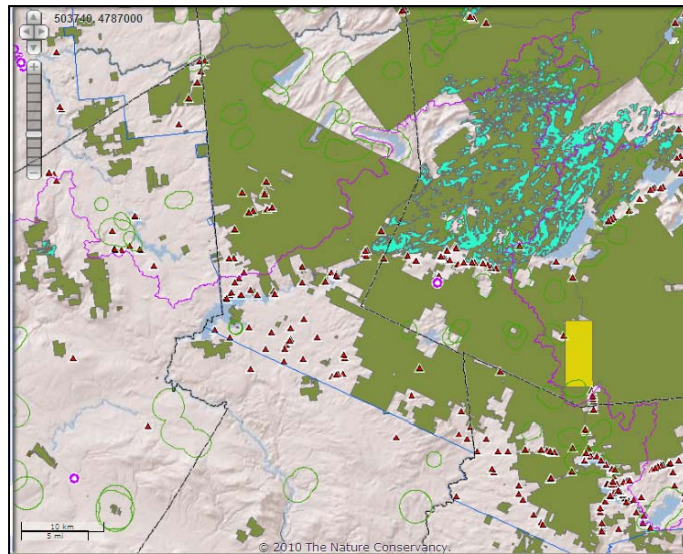


Giant Hogweed in Finger Lakes, NY



How does *iMapInvasives* support natural resource managers?

- Produce layered, customizable maps and reports of invasive species locations for participating states and provinces.
- Perform GIS spatial analyses and search/query data by species, location, contributor, date, etc.
- Facilitate the Early Detection/Rapid Response of new invasions through email alerts.
- Produce early detection watch-lists and view delimited Invasive Species Prevention Zones.
- Online data entry and batch/bulk uploading for partner organizations.

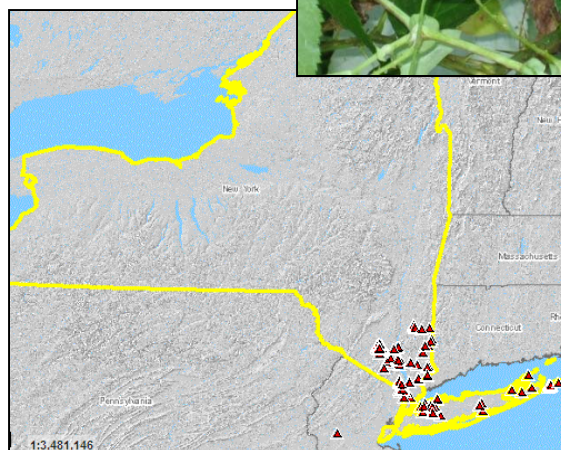


What other roles are served by *iMapInvasives*?

Citizen science – The public can contribute to *iMapInvasives* by becoming a registered user and inputting data on invasive species sightings!

Educational Collaborations – Educators can use *iMapInvasives* as a hands-on tool to engage students in science lessons while increasing the coverage of the database!

Understanding invasions – Advanced data fields capture details about infestations and control measures to better understand the scope and intensity of invasions over time and treatment effectiveness.



How can interested states and provinces participate in *iMapInvasives*?

For more information, please contact:

Meg Wilkinson
Invasive Species Database Program Coordinator
New York Natural Heritage Program
(518) 402-8983

Questions? Contact:
imapinvasives@nynhp.org



New York
Natural Heritage
Program



www.imapinvasives.org